

CONSTRUCTION ARCHITECTURE GEN
WAREHOUSE ENGINEERING
CAPITAL FIT-OUT CON
LOGISTICS CONTRACT
REPUTATION TECHN
CLIENT HARMONY DE
GENERAL REFERENCE
WARRANTY FIT-OUT TECH
ARCHITECTURE REFERENCE CAPITA



COMPANY
PROFILE

atitoka

CONTENTS

ABOUT US 03

ABOUT US

SERVICES

STRUCTURE

WORK PROCESS

PORTFOLIO 08

OFFICE SPACES

RETAIL POINTS AND SHOW ROOMS

COMMON SPACES

FOODSERVICE SPACES

BRANCHES AND DEPARTMENT OFFICES

PRIVATE RESIDENCES

REFERENCES 85

CONTACTS 88

ABOUT US



ATITOKA MEANS:

A TEAM OF

400
PROFESSIONALS

EXPERIENCE REALIZATION

> 22 >
YEARS

> 70 000 >
M2 SIMULTANEOUSLY

CERTIFICATES
LICENSES
INSURANCE

IN-HOUSE ENGINEERING
STAFF



IN-HOUSE
ARCHITECTURE AND
ENGINEERING BUREAU



IN-HOUSE
MANUFACTURE



IN-HOUSE
STORAGE
FACILITIES



REPUTATION AND
REFERENCE LETTERS



PROJECT
IMPLEMENTATION
METHODOLOGY



QUALITY
CONTROL
POLICY



SAFETY PROCEDURE
AND HEALTH
PROTECTION



ENVIRONMENTAL
PROTECTION



COMPANY SERVICES

GENERAL CONTRACTING

- › PROJECT MANAGEMENT
- › CHOICE OF SUB-CONTRACTORS
- › REPRESENTING CUSTOMER INTERESTS TO ALL RELEVANT AUTHORITIES
- › COMMISSIONING

DESIGN

- › DEVELOPING PLANNING DECISIONS
- › DEVELOPING DESIGN CONCEPTS
- › ARCHITECTURAL DESIGN OF ALL STAGES
- › ENGINEERING DESIGN OF ALL STAGES
- › DEVELOPING AS-BUILT DOCUMENTATION

CONSTRUCTION

- › DISMANTLING
- › CAPITAL CONSTRUCTION
- › FIT-OUT
- › INSTALLATION OF SERVICES: MECHANICAL SYSTEMS, POWER SUPPLY, LOW-VOLTAGE SYSTEMS, FIRE-PROTECTION SYSTEMS

SUPPLEMENTARY

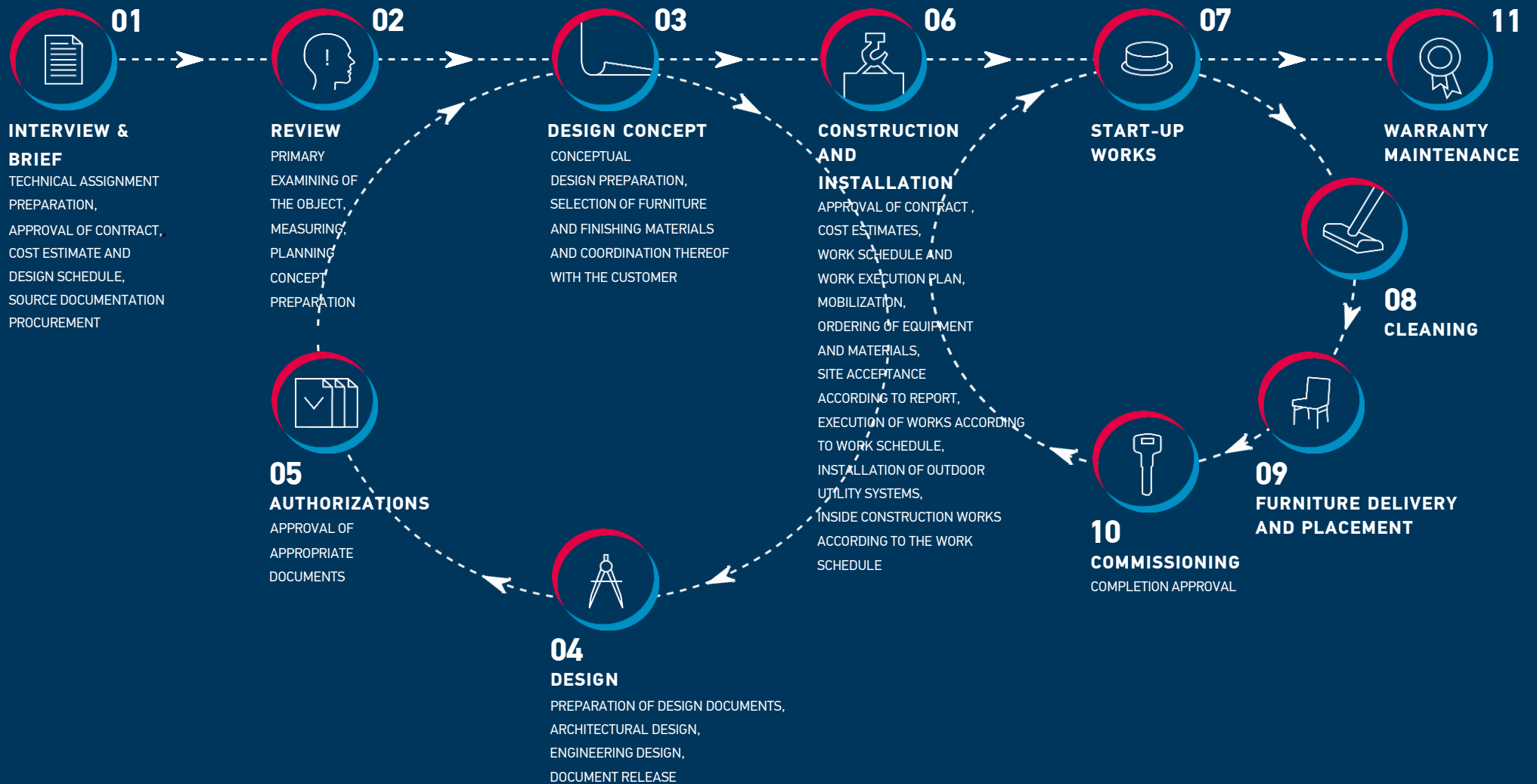
- › POST-WARRANTY MAINTENANCE
- › STORAGE FACILITIES

COMPANY STRUCTURE



DOING BUSINESS WITH US

FROM THE FIRST MEETING TO COMMISSIONING



PORTFOLIO



CLASSIFICATION OF REALIZED PROJECTS



OFFICE SPACES



COMMON SPACES



BRANCHES AND DEPARTMENT OFFICES



HOTEL FACILITIES



FOODSERVICE SPACES



RETAIL POINTS AND SHOW ROOMS



PRIVATE RESIDENCES



DATA PROCESSING CENTERS



Pernod Ricard

OFFICE SPACES
INDUSTRY
RETAIL AND
PRODUCTION



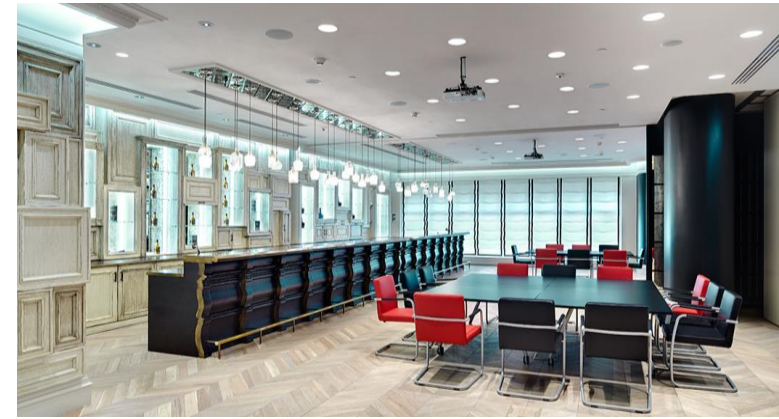
LOCATION
MOSCOW, YAKIMANSKIY LANE, 6
IMPERSKY HOUSE

TOTAL AREA
3 000 SQ.M

YEAR OF IMPLEMENTATION
2013-2014

COMPLETED WORK
• GENERAL CONTRACTING











OFFICE SPACES
INDUSTRY
MEDIA AND COMMUNICATIONS

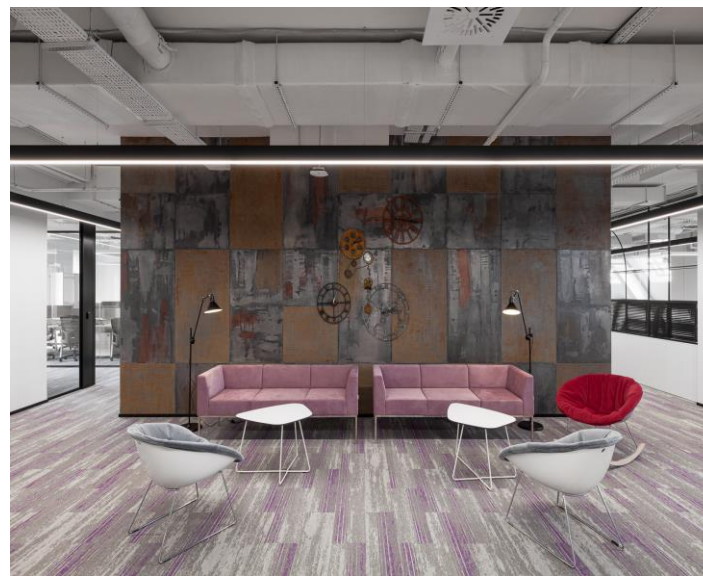


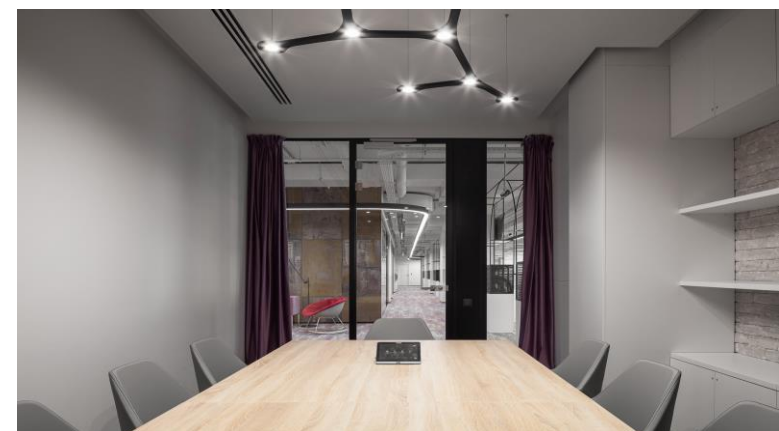
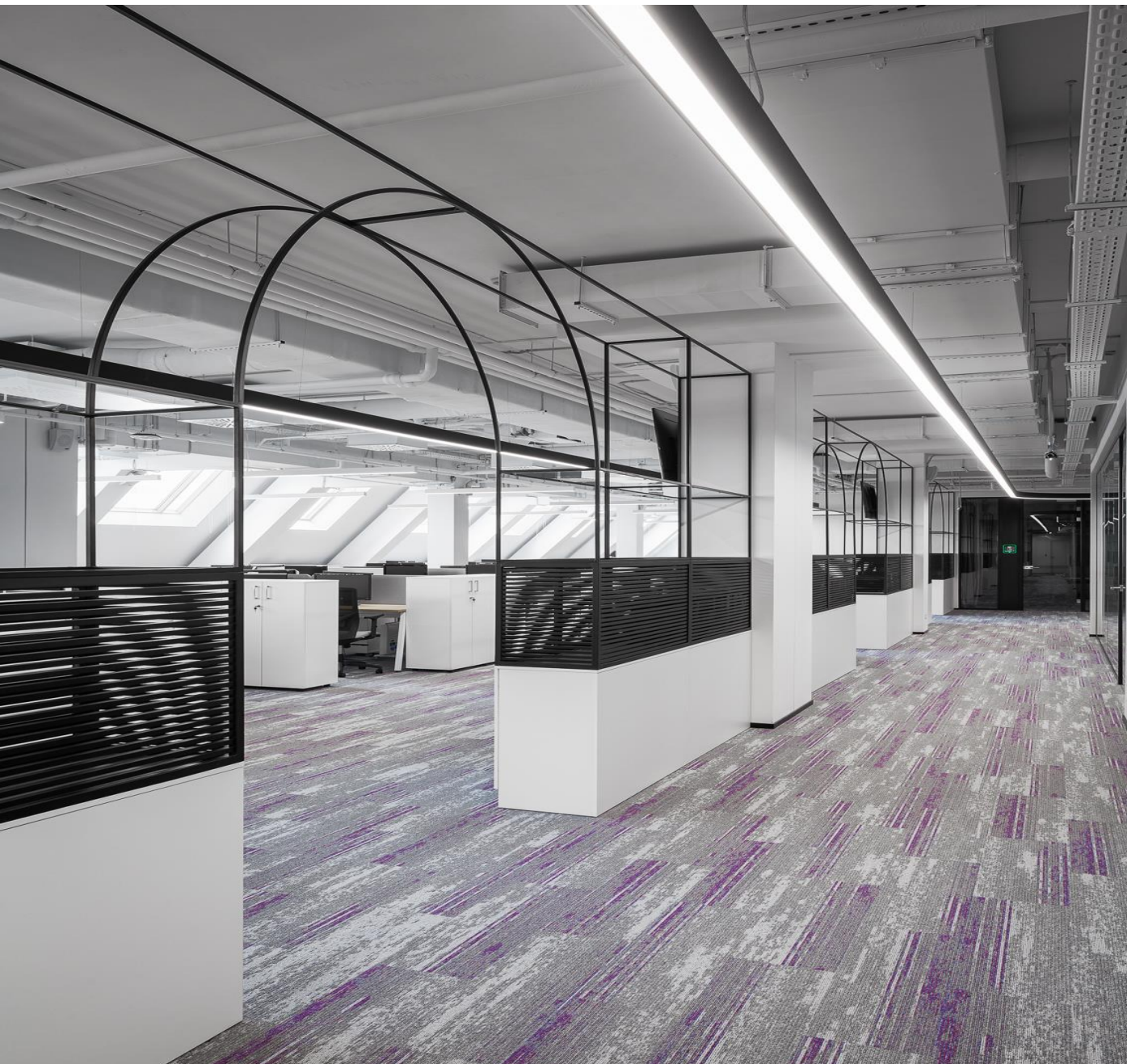
LOCATION
MOSCOW, VARSHAVSKOE HIGHWAY, 9, BLD. 1

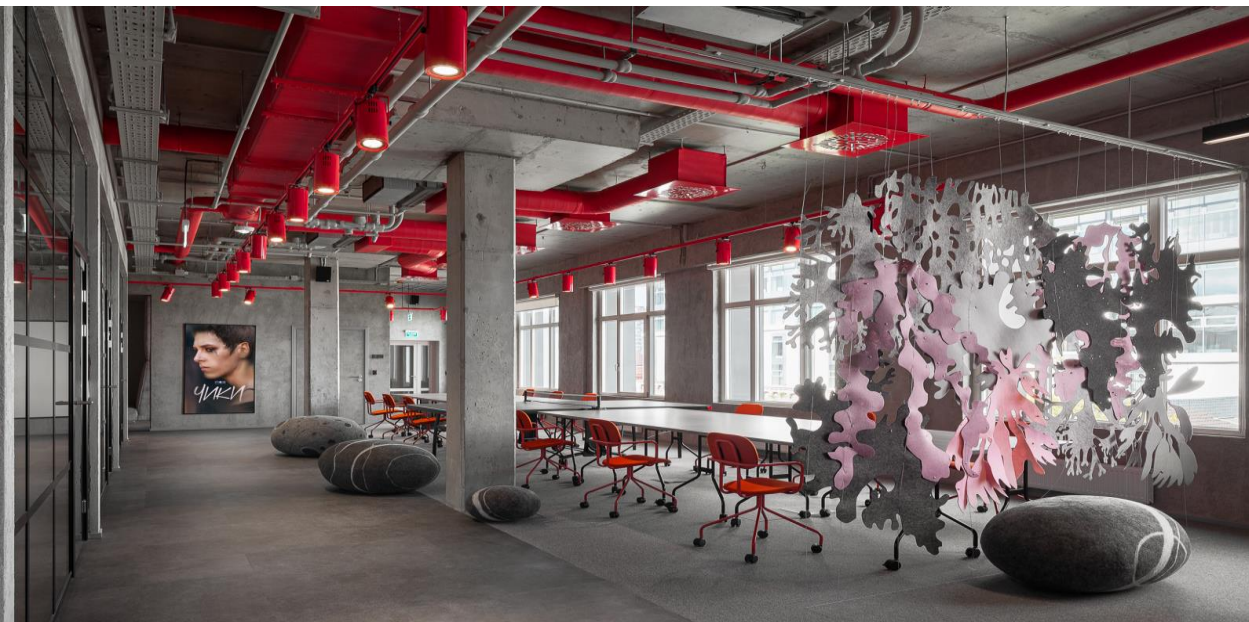
TOTAL AREA
4 700 SQ.M.

YEAR OF IMPLEMENTATION
2020

COMPLETED WORK
• GENERAL CONTRACTING









mafin.

OFFICE SPACES
INDUSTRY
IT-COMPANY

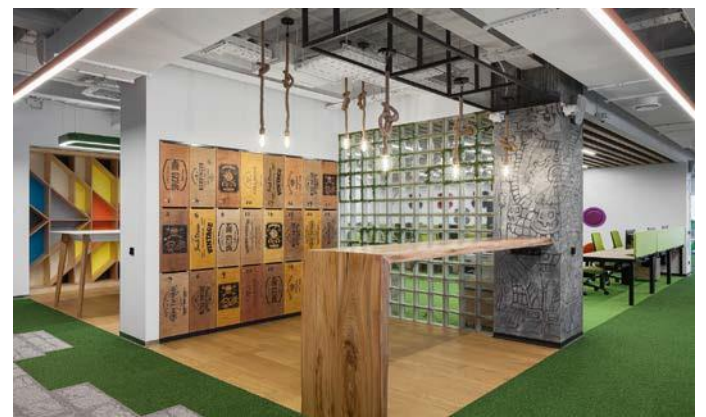
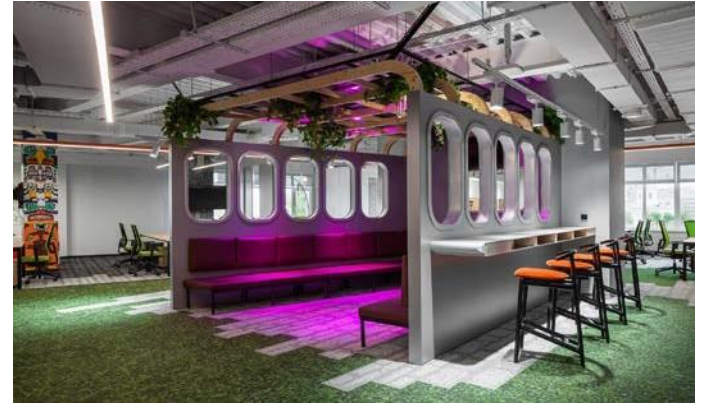


LOCATION
MOSCOW, LENINSKAYA SLOBODA ST. 19
BC OMEGA PLAZA

TOTAL AREA
1 500 SQ.M.

YEAR OF IMPLEMENTATION
2019

COMPLETED WORK
• GENERAL CONTRACTING







OFFICE SPACES
INDUSTRY
IT-COMPANY



LOCATION

SAINT PETERSBURG, PRIMORSKIY PR., 70B2

TOTAL AREA

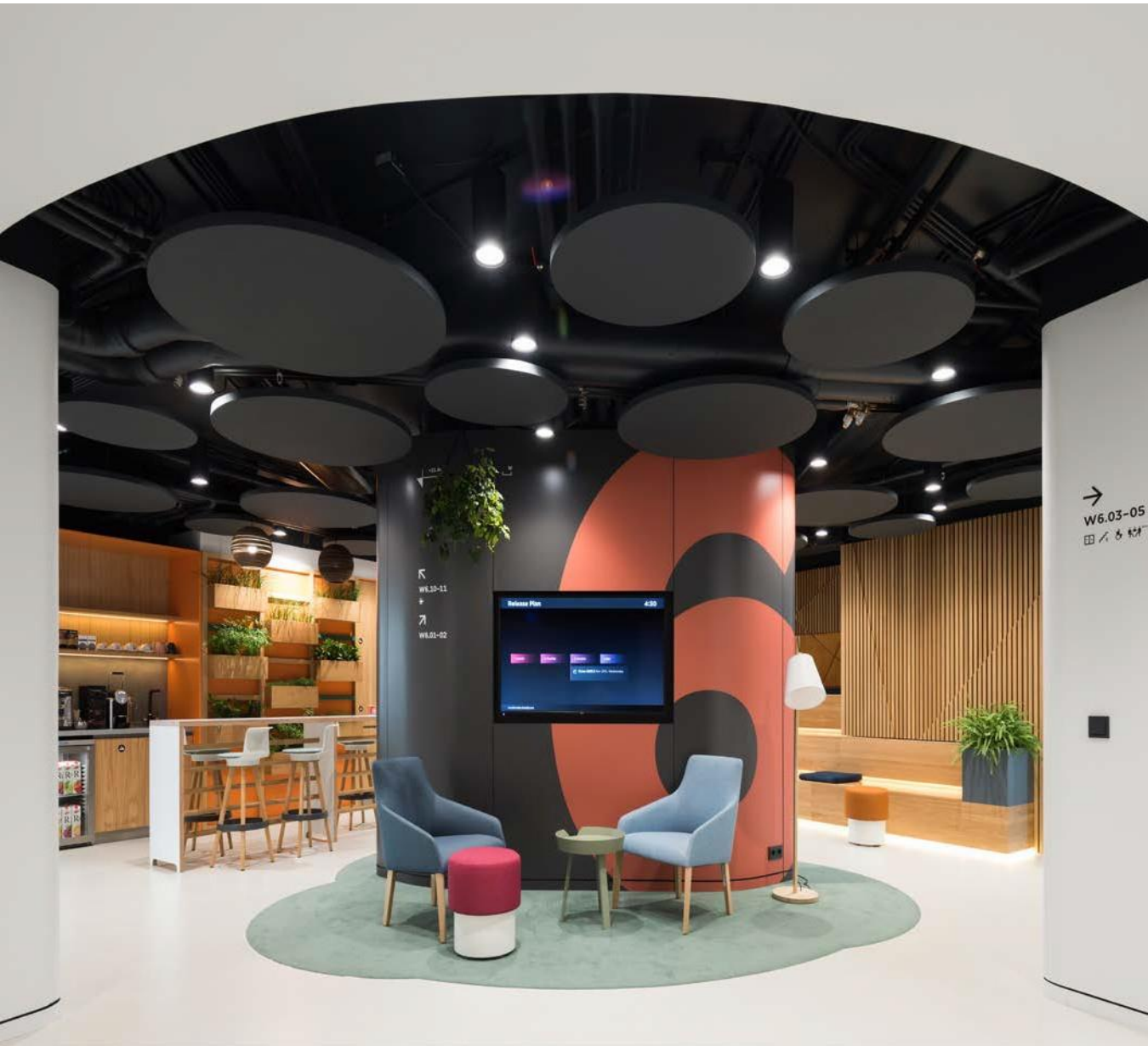
10 100 SQ.M.

YEAR OF IMPLEMENTATION

2019

COMPLETED WORK

- GENERAL CONTRACTING
-





L'ORÉAL

OFFICE SPACES
INDUSTRY
BEAUTY



LOCATION

MOSCOW, GOLUTVINSKY PER. 1, 6
BP GOLUTVINSKAYA SLOBODA

TOTAL AREA

1 200 SQ.M

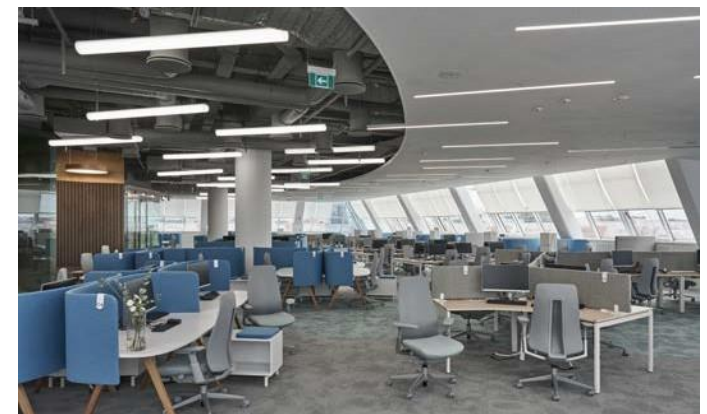
YEAR OF IMPLEMENTATION

2019

COMPLETED WORK

- GENERAL CONTRACTING
-







OFFICE SPACES
INDUSTRY
IT-COMPANY



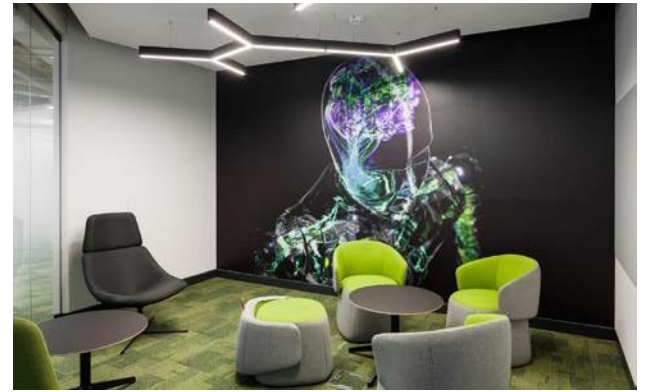
LOCATION
MOSCOW, DVINCEV ST., 12/1, FL.7
BC DVINCEV

TOTAL AREA
1 100 SQ.M.

YEAR OF IMPLEMENTATION
2018

COMPLETED WORK

- GENERAL CONTRACTING





RE:SOURCES

OFFICE SPACES
INDUSTRY
ADVERTISING
AGENCY



LOCATION

MOSCOW, LENINGRADSKIY PR., 15, BLD. 14
BC BOL'SHEVIK

TOTAL AREA

870 SQ.M

YEAR OF IMPLEMENTATION

2017

COMPLETED WORK

- GENERAL CONTRACTING







OFFICE SPACES

INDUSTRY
RETAIL AND
PRODUCTION



LOCATION

MOSCOW, DOLGORUKOVSKAYA ST., 7

TOTAL AREA

5 200 SQ.M.

YEAR OF IMPLEMENTATION

2017

COMPLETED WORK

- GENERAL CONTRACTING







Аndex

OFFICE SPACES
INDUSTRY
IT-COMPANY



LOCATION
MOSCOW, SADOVNICHESKAYA ST., 82/2

TOTAL AREA
8 330 SQ.M

YEAR OF IMPLEMENTATION
2017

COMPLETED WORK
• GENERAL CONTRACTING





World Class

COMMON SPACES
INDUSTRY
FITNESS CENTRE



LOCATION
MOSCOW, ORUZHEYNY LANE, 41

TOTAL AREA
3 200 SQ.M

YEAR OF IMPLEMENTATION
2017

COMPLETED WORK

- GENERAL CONTRACTING





PHILIP MORRIS

OFFICE SPACES

INDUSTRY
RETAIL AND
PRODUCTION



LOCATION

MOSCOW, YARTSEVSKAYA ST., 19 B
KUNTSEVO PLAZA

TOTAL AREA

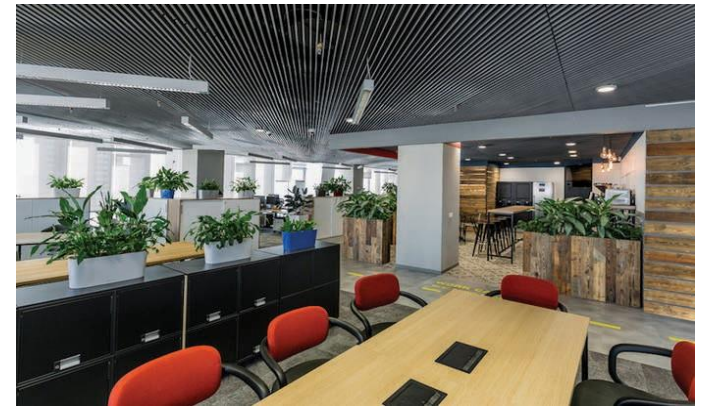
4 800 SQ.M.

YEAR OF IMPLEMENTATION

2016

COMPLETED WORK

- GENERAL CONTRACTING
-





OFFICE SPACES
INDUSTRY
RETAIL AND
PRODUCTION

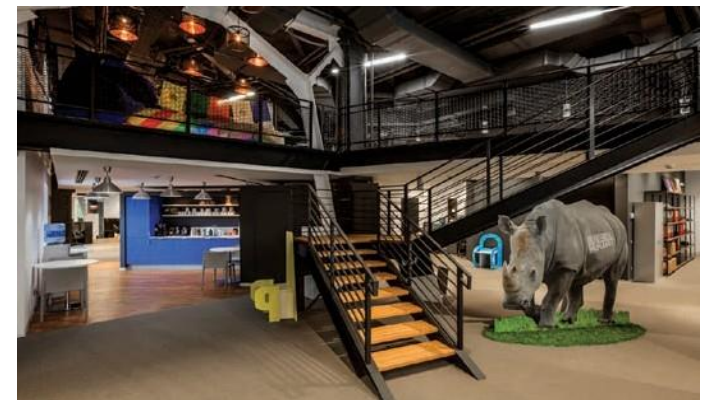
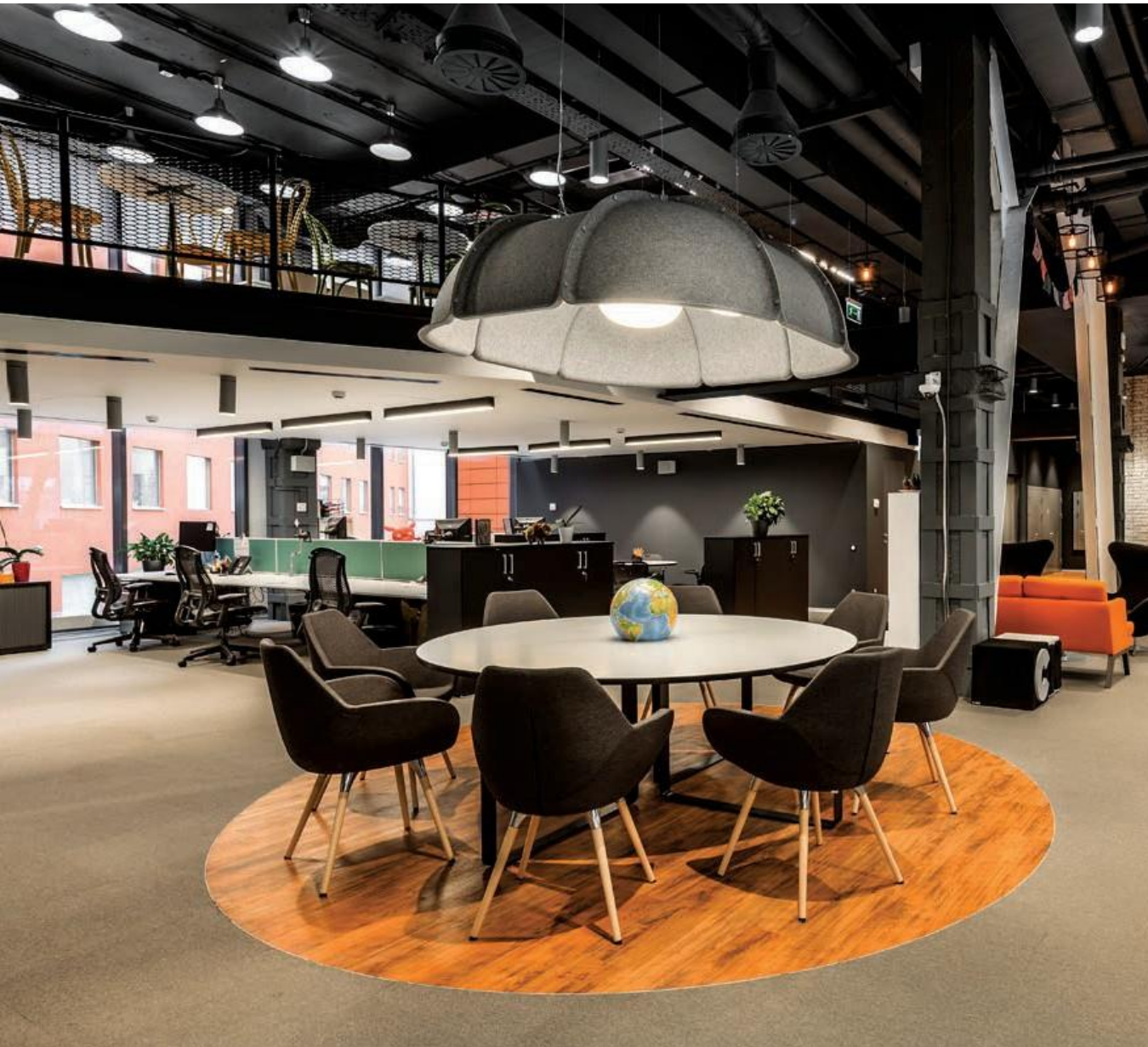


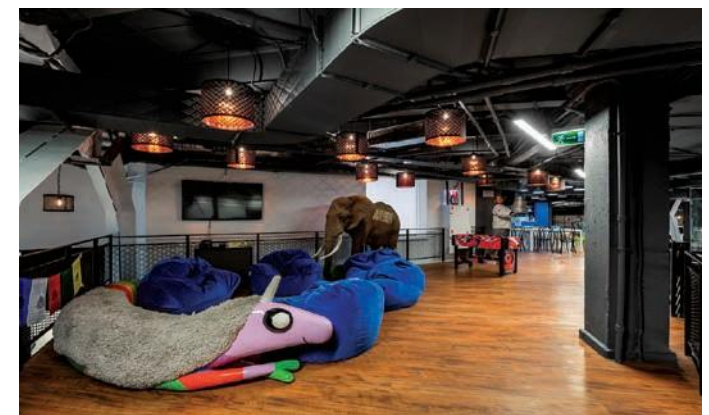
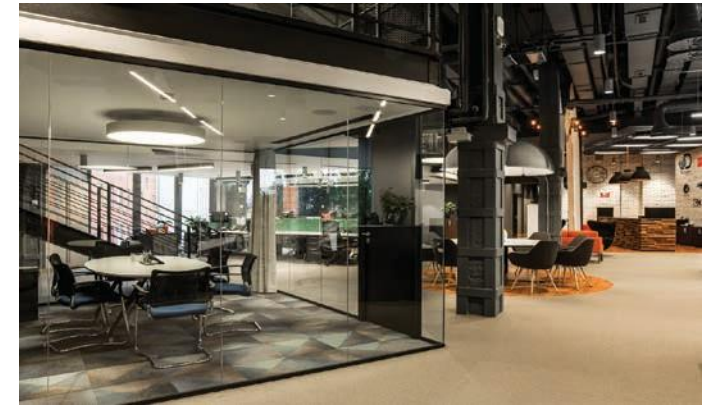
LOCATION
MOSCOW, STANISLAVSKOGO ST., 21/1

TOTAL AREA
1 200 SQ.M

YEAR OF IMPLEMENTATION
2016

COMPLETED WORK
• GENERAL CONTRACTING







Leo Burnett

OFFICE SPACES
INDUSTRY
ADVERTISING
AGENCY



LOCATION
MOSCOW, LENINGRADSKIY PR., 15,
BLDG. 1, 14

TOTAL AREA
8 800 SQ.M

YEAR OF IMPLEMENTATION
2014-2015

COMPLETED WORK
• GENERAL CONTRACTING

WINNER OF THE CATEGORY
CORPORATE BRANDED ENVIRONMENT OBJECT

makeitwork
INTERIOR DESIGN | **2015**





OFFICE SPACES
COMMON SPACES



LOCATION

MOSCOW REGION, DOMODEDOVO,
DOMODEDOVO AIRPORT

TOTAL AREA

839 SQ.M.

YEAR OF IMPLEMENTATION

2016

COMPLETED WORK

- GENERAL CONTRACTING
-





TEVA

OFFICE SPACES

INDUSTRY
RETAIL AND
PRODUCTION



LOCATION

MOSCOW, VALOVAYA ST., 35
BC WALL STREET

TOTAL AREA

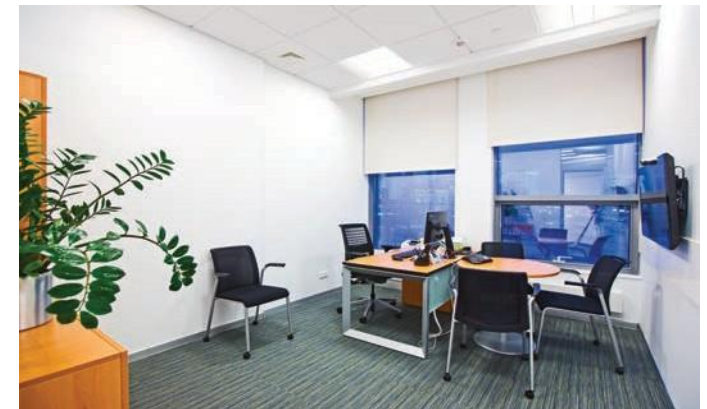
900 SQ.M.

YEAR OF IMPLEMENTATION

2016

COMPLETED WORK

- GENERAL CONTRACTING
-





COMMON SPACES
INDUSTRY
FITNESS CENTRE



LOCATION
MOSCOW, KRASNOPRESNENSKAYA EMB.,
12B

TOTAL AREA
1 800 SQ.M

YEAR OF IMPLEMENTATION
2016

COMPLETED WORK
• GENERAL CONTRACTING





OFFICE SPACES
INDUSTRY
RETAIL AND
PRODUCTION



LOCATION
MOSCOW, LESNAYA ST., 7
BC BELYE SADY

TOTAL AREA
1 100 SQ.M.

YEAR OF IMPLEMENTATION
2015

COMPLETED WORKS
• GENERAL CONTRACTING





Inspired by patients.
Driven by science.

OFFICE SPACES

INDUSTRY
RETAIL AND
PRODUCTION



LOCATION

MOSCOW, 1st KRASNOGVARDEYSKY DR., 15

TOTAL AREA

900 SQ.M

YEAR OF IMPLEMENTATION

2016

COMPLETED WORK

- GENERAL CONTRACTING
-





FK «CAPITAL»

OFFICE SPACES
INDUSTRY
FINANCE



LOCATION
MOSCOW, PRESNENSKAYA AM., 8/1

TOTAL AREA
800 SQ.M

YEAR OF IMPLEMENTATION
2014-2015

COMPLETED WORKS
• GENERAL CONTRACTING





PUBLICIS GROUPE

OFFICE SPACES
INDUSTRY
ADVERTISING AGENCY



LOCATION
MOSCOW, LENINGRADSKIY PR., 15, BLD. 1, 14

TOTAL AREA
12 000 SQ.M

YEAR OF IMPLEMENTATION
2014-2015

COMPLETED WORK
• GENERAL CONTRACTING







HOTEL FACILITIES
COMMON SPACES
INDUSTRY
HORECA



LOCATION

MOSCOW, LENINGRADSKOE H., 39, BLD. 1,4

TOTAL AREA

12 000 SQ.M.

YEAR OF IMPLEMENTATION

2012-2014

COMPLETED WORK

- GENERAL CONTRACTING

ПОБЕДИТЕЛЬ НОМИНАЦИИ
ГОСТИНИЧНАЯ НЕДВИЖИМОСТЬ



CRE
Commercial Real Estate
MOSCOW AWARDS





OFFICE SPACES
INDUSTRY
RETAIL AND
PRODUCTION

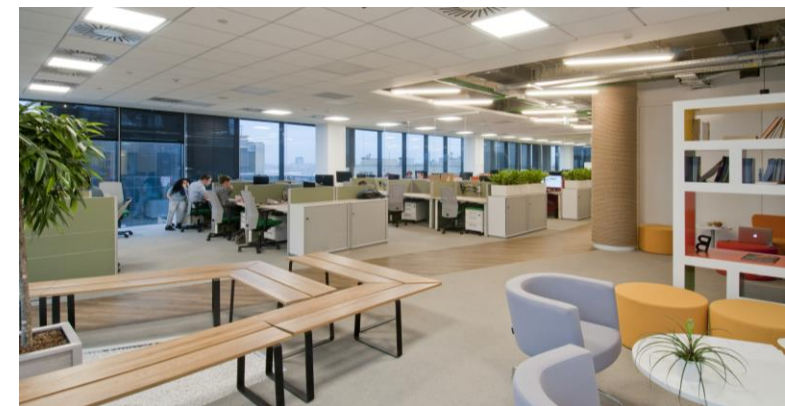


LOCATION
MOSCOW, LESNAYA STR., 7
BC BELYE SADY

TOTAL AREA
1 750 SQ.M.

YEAR OF IMPLEMENTATION
2013-2014

COMPLETED WORK
• GENERAL CONTRACTING





OFFICE SPACE
BRANCHES AND
DEPARTMENT OFFICES
INDUSTRY
FINANCE



LOCATION

MOSCOW, PRESNENSKAYA EMB.
8/1 TBC MOSCOW CITY

TOTAL AREA

3 300 SQ.M

YEAR OF IMPLEMENTATION

2012, 2013

COMPLETED WORK

- GENERAL CONTRACTING





Андреевский

COMMON SPACES



LOCATION

MOSCOW, 2-YA FRUNZENSKAYA ST.,
8, B. 1-7

TOTAL AREA

1 450 SQ.M

YEAR OF IMPLEMENTATION

2013

COMPLETED WORK

• GENERAL CONTRACTING





The WALT DISNEY Company

OFFICE SPACES
INDUSTRY
RETAIL AND
PRODUCTION



LOCATION

MOSCOW, NOVINSKIY BLVD, 8
BC LOTTE PLAZA

TOTAL AREA

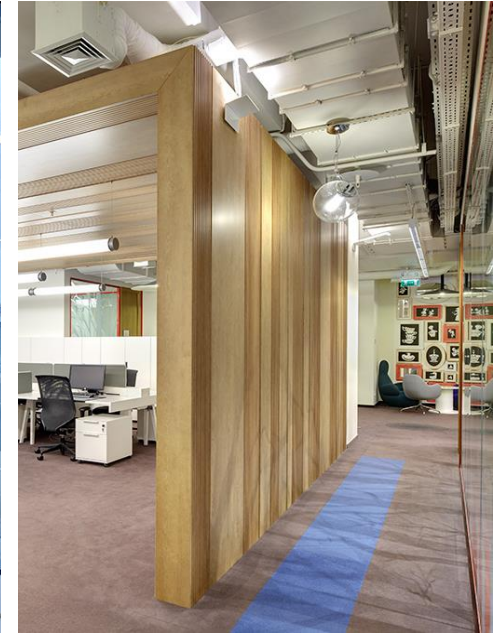
1 230 SQ.M

YEAR OF IMPLEMENTATION

2013

COMPLETED WORK

- GENERAL CONTRACTING
 - DESIGN
-





OFFICE SPACES
INDUSTRY
CONSTRUCTION



LOCATION
MOSCOW, VARSHAVSKOE H., 9, BLDG 1
BC DANILOVSKAYA MANUFACTURA

TOTAL AREA
1 000 SQ.M

YEAR OF IMPLEMENTATION
2012

COMPLETED WORK
• GENERAL CONTRACT





**MOSCOW
EXCHANGE**

OFFICE SPACE
COMMON SPACE
FOODSERVICE SPACES
INDUSTRY
FINANCE



LOCATION

MOSCOW, SPARTAKOVSKAYA ST.,
12, BC SPARTAKOVSKY

TOTAL AREA

14 320 SQ.M

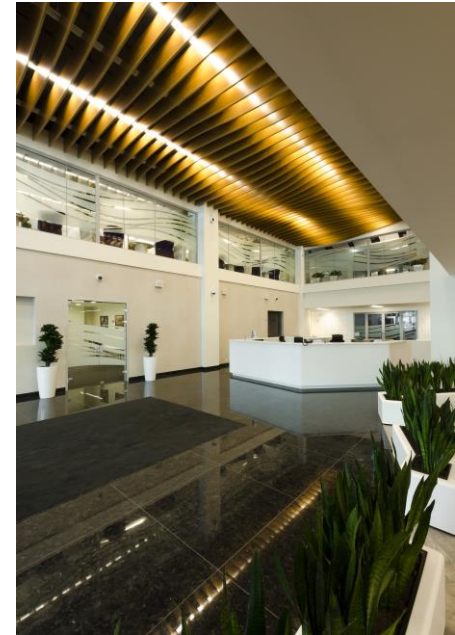
YEAR OF IMPLEMENTATION

2012

COMPLETED WORK

• GENERAL CONTRACTING







OFFICE SPACES
INDUSTRY
PHARMACEUTICALS



LOCATION
MOSCOW, LENINGRAD HIGHWAY,
16 A, BC METROPOLIS

TOTAL AREA
4 200 SQ.M

YEAR OF IMPLEMENTATION
2011

COMPLETED WORK
• GENERAL CONTRACTING





OFFICE SPACE
COMMON SPACE
FOODSERVICE SPACES

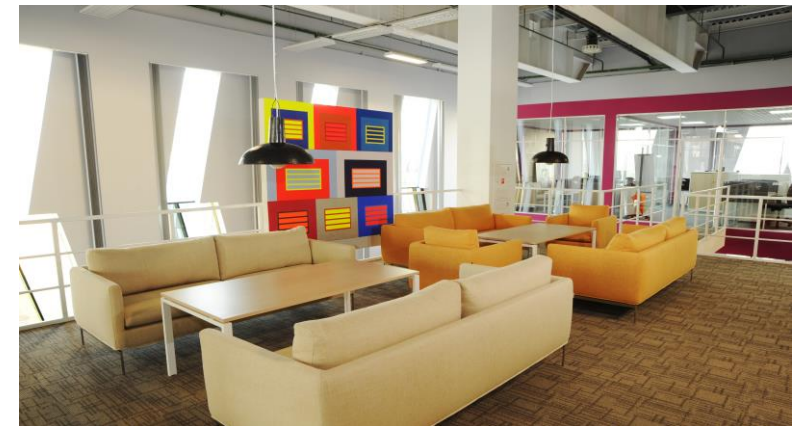


LOCATION
MOSCOW REGION, ODINTSOVO AREA,
SKOLKOVO VILLAGE, NOVAYA ST., 100

TOTAL AREA
11 800 SQ.M

YEAR OF IMPLEMENTATION
2009

COMPLETED WORK
• CIVIL WORKS







OFFICE SPACE
BRANCHES AND
DEPARTMENT OFFICES
INDUSTRY
FINANCE



LOCATION

MOSCOW
MOSCOW REGION,
SET. BARVIKHA LUXURY VILLAGE
CHELYABINSK
ROSTOV ON DON
KAZAN
UFA
ST. PETERSBURG
KRASNOYARSK
NIZHNY NOVGOROD
VORONEZH
TYUMEN

TOTAL AREA

17 100 SQ.M

YEAR OF IMPLEMENTATION

2007 - 2009

COMPLETED WORK

• GENERAL CONTRACTING





СЕТЬ ПРОЕКТОВ
**LEGI
ON
DEVELOP
MENT**

COMMON SPACE



LOCATION

MOSCOW, BOLSHAYA ORDYNKA ST.,
40, P. 4, BC LEGION I

TOTAL AREA

8 000 SQ.M

YEAR OF IMPLEMENTATION

2005

COMPLETED WORK

• GENERAL CONTRACTING





PRIVATE RESIDENCES

LOCATION

MOSCOW AND OTHER REGIONS

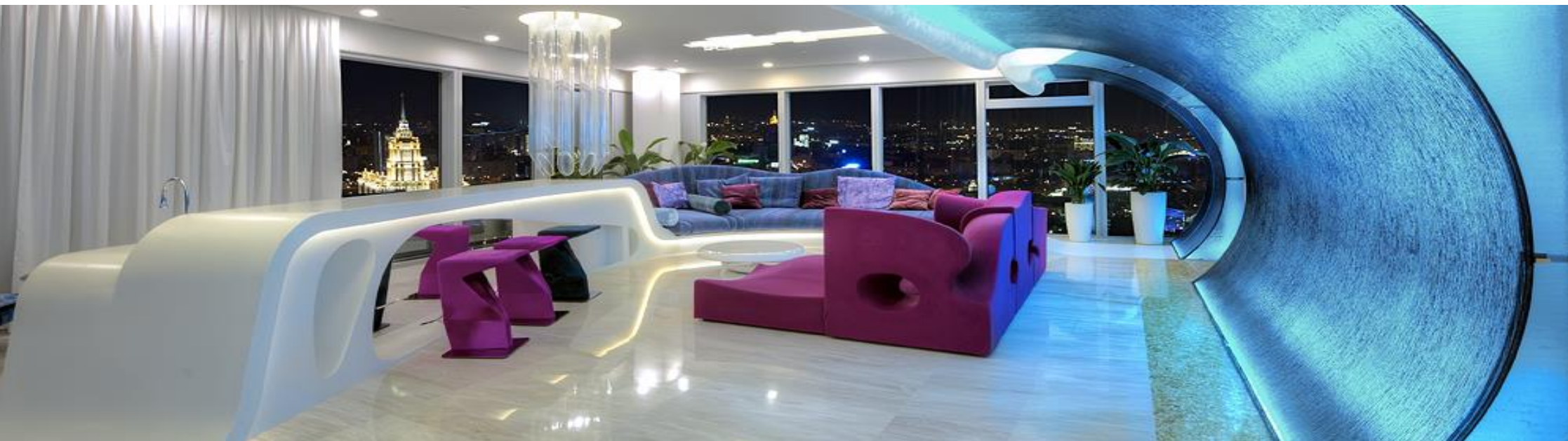
SOME PRIVATE PROJECTS
CANNOT BE PUBLISHED
BECAUSE WE FOLLOW
THE POLICY OF ABSOLUTE
CONFIDENTIALITY.

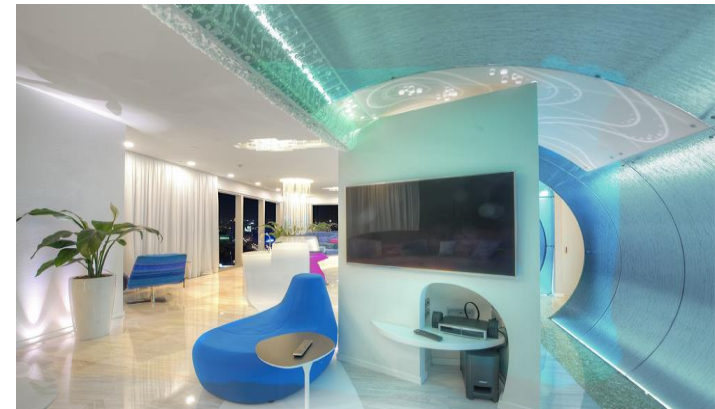
COMPLETED WORK

- GENERAL CONTRACTING
 - CAPITAL CONSTRUCTION
 - ARCHITECTURAL AND ENGINEERING DESIGN
 - CIVIL WORKS
-









THEY RECOMMEND US

Panasonic

› DESPITE SHORT TIME AND COMPLEXITY OF THE OBJECT BECAUSE OF NECESSITY TO CHANGE PLANNING DECISIONS, NUMEROUS APPROVALS, WITH THE OWNER OF THE PREMICES, THE COMPANY ATITOKA SOLVED ALL THE PROBLEMS AND PROVIDED A QUICK AND WORTHY COMPLETION OF THE PROJECT. THE TEAM IS PROFESSIONAL, INVOLVED, IN THE PROGRESS OF THE PROJECT, OPTIMISTIC AND BENEVOLENT. WE RECOMMEND THE COMPANY ATITOKA TO EVERYONE WHO APPRECIATES QUALITY, RELIABILITY AND HONESTY.

Ренессанс Кредит

› AS A GENERAL CONTRACTOR THE ATITOKA COMPANY FULFILLED WORKS ON THE DESIGN, CONSTRUCTION, FINISHING AND INSTALLATION, COMMISSIONING INCLUDING ENGINEERING SYSTEMS. ALL THE WORKS WERE FULFILLED ACCORDING TO THE TERMS OF CONTRACT, INTERNATIONAL QUALITY STANDARDS AND SAFETY REQUIREMENTS. THE TEAM SHOWED A HIGH LEVEL ORGANIZATION AND PROFESSIONALISM AND THUS PROVED THAT ATITOKA IS A RELIABLE PARTNER THAT WE ARE READY TO RECOMMEND.

Sotheby's

› WE CHOSE ATITOKA AS A GENERAL CONTRACTOR FOR DESIGN, FIT-OUT, ENGINEERING INSTALLATION AND COMMISSIONING WORKS. AN IMPORTANT FACTOR IN REALIZING OF THIS PROJECT WAS USING OF MODERN WAY OF MANAGEMENT AND CONTROL, PROFESSIONALISM AND RESPONSIBILITY OF THE PROJECT TEAM. ALL THE TERMS OF THE CONTRACT WERE FULFILLED ACCORDING TO THE SCHEDULE AND WITH THE APPROPRIATE QUALITY.

ММББ MICEX

› IN THE COURSE OF CONSTRUCTION THE TEAM SHOWED QUICK AND PROFESSIONAL REACTION TO THE CUSTOMER COMMENTS THUS PROVING HIGH QUALIFICATION IN SOLVING PROBLEMS CAUSED BY COMPLICATED SITE AND UNUSUAL WORKS. ALL THE WORKS WERE FULFILLED ACCORDING TO SAFETY PROCEDURE AND ENVIRONMENT CONTROL UNDER THE AGREED BUDGET AND CONTRACT TERMS.

THEY RECOMMEND US



THEY RECOMMEND US



**МОСКОВСКАЯ
БИРЖА**



Abbott
A Promise for Life




Pernod Ricard



NU SKIN

HALLIBURTON

СКОЛКОВО
Московская школа управления



Disney



**Ренессанс
Кредит**

Panasonic



Enel ALLEN & OVERY



ALLERGAN

lenovo **FOR
THOSE
WHO DO.**

CONSTRUCTION ARCHITECTURE GEN
USE THANK YOU ENGINEERING GUA
TAL FOR YOUR ATTENTION! FIT-OUT
LOGISTICS CONTRACTING GUARANT
REPUTATION TECHNICAL REFERENC
CLIENT HARMONY DESIGN WAREHO
GENERAL REFERENCE ENGINEERIN



VLADIMIR SAMOILOV

COMMERCIAL DIRECTOR

E-MAIL V.SAMOILOV@ATITOKA.RU

TEL. +7 915 308 0841

VIKTORIA KARATAEVA

HEAD OF DEVELOPMENT DEPARTMENT

E-MAIL V.KARATAEVA@ATITOKA.RU

TEL. +7 915 108 9058

ATITOKA.RU

19, LENINSKAYA SLOBODA STR., 115280, MOSCOW, RUSSIA

E-MAIL OFFICE@ATITOKA.RU

TEL. +7 495 640 8088